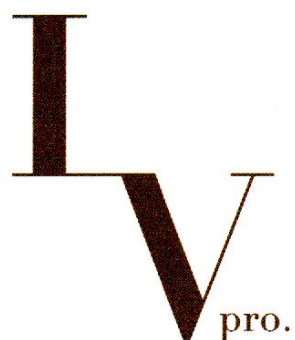


〈English version〉



Technical Manual

acid fiber straight

① **Hair quality diagnostic (Consultation)**

Diagnose hair texture and damage. Especially when dealing with severely damaged or bleached hair, carefully judge whether the hair can withstand the heat of a straightener.

② **Shampoo if necessary and dry completely with a towel**

(For hair with a silicone-based conditioner, be sure to wash the hair with shampoo.)

③ **Apply "LVpro.01"**

Applying amount


Medium hair: 150g ~ / Long hair: 200g ~

Apply generously with a brush 1 cm away from the root.  
Please note that if the dose is insufficient, the effect will be reduced.

④ **Standing (heating): The time is shown in the table below.**

\* Cover the hair with plastic wrap before heating. \*The temperature is set so that the "Treatment", so be careful not to overheat.

(This is a guide. Please adjust according to the hair.)

	Levels of damage	Fine hair	Normal hair	Rough hair
 <b>Rest time Chart</b>	Low damage hair	30min	30min	30 ~ 40min
	Moderately damaged hair	25min	30min	30min
	Extremely damaged hair	15min	20min	25min
	(Straight permed hair) Extremely damaged hair	15min	20min	20min

⑤ **Rinse with water**



- No need for softening test, rinse directly.
- Rinse 1st dose thoroughly with a mild shampoo without rubbing your hair.  
(If the hair is tangled, add a little hair conditioner and rinse.)

⑥ **Blow dry hair: Comb by hand and blow straight**

⑦ **Hair straightener iron operation**

**180°C (standard)**



- Slice width: 1cm-1.5cm (For strong kinky hair, use a thin slice width)
  - If there is no special problem in the part other than the retouch, put 2 to 3 panels on the tip of the hair and iron it.
- For damaged or bleached hair, lower the temperature of the iron.

⑧ **Apply "LVpro.02"**

**Stand for 10-15 minutes**

Apply generously to hair using the applicator.  
In addition, LV pro.2 dose has a repairing effect. If the dose is insufficient, the effect will be reduced.

⑨ **Rinse**

⑩ **Styling**

When using "LV Serum" as a non-rinse treatment, use only a small amount.  
Applying too much may cause stickiness.

参考メニュー

(LVpro.) Acid Fiber Hair Straightener

Time required: Average 2.5 hours to 3 hours (including haircut)

Reference **LVpro. Booster G48 usage formula**

LVpro. acid fiber straight × BOOSTER G48

How to use

Please add the specified amount of "LVpro Booster G48" to the 1st dose of "LVpro. acid fiber straight".  
After mixing the two products, use up the amount and never return to the product even if there is a surplus.

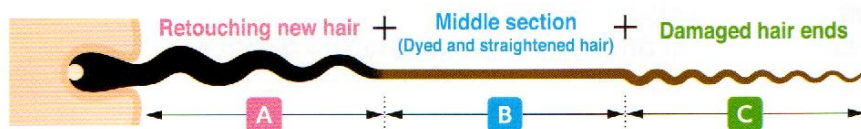
Case using LV pro. [HARD]

Target hair: healthy hair, colored hair, light-damaged hair, middle-damaged hair			
BOOSTER G48 usage	0%	Add 5%	Add 10%
Reduction value (thio conversion)	5.0	6.0	7.0

Case using LV pro. [NATURAL]

Target Hair: All damage levels including bleached and extremely damaged hair			
BOOSTER G48 usage	0%	Add 5%	Add 10%
Reduction value (thio conversion)	3.9	5.0	6.0

## [The guide of LVpro. 2] Retouch (Kinky hair) + Previously straightened sections + Rough hair



A common case for customers who repeat hair coloring and straightening

### ! Hair quality diagnostic (Consultation)

Diagnose hair texture and damage. Especially when dealing with severely damaged or bleached hair, carefully judge whether the hair can withstand the heat of a straightener.

### 1 Shampoo if necessary and dry completely with a towel

(For hair with a silicone-based conditioner, be sure to wash the hair with shampoo.)

### 2 New hair section A Apply "LVpro.01" Standing (heating) 15min

Select the straightener according to the curly level.

If the hair is very kinky, you can use "Booster G48" to enhance the effect.

\* Cover the hair with plastic wrap before heating.  
\* The temperature is set so that the "Treatment", so be careful not to overheat.

### 3 Middle section B Apply "LVpro.01" [NATURAL] Standing (heating) 15min

If possible, it is advisable to protect the damaged hair ends with gauze to prevent the agent from spreading.

\* Cover the hair with plastic wrap before heating.  
\* The temperature is set so that the "Treatment", so be careful not to overheat.

### 4 Damaged hair ends section C Apply "LVpro.01" [NATURAL] Cooling and leaving for 5 minutes

Please apply [NATURAL] on the damaged hair ends.

\* Do not heat after application

### 5 Rinse with water



- No need for softening test, rinse directly.
- Rinse 1st dose thoroughly with a mild shampoo without rubbing your hair. (If the hair is tangled, add a little hair conditioner and rinse.)

### 6 Blow dry hair: Comb by hand and blow straight

### 7 Hair iron operation: New hair section A ~ Middle section B 180°C (standard)

- Slice width: 1cm-1.5cm (For strong kinky hair, use a thin slice width)
- If there is no special problem in the part other than the retouch, put 2 to 3 panels on the tip of the hair and iron it.

### 8 Hair iron operation: Damaged hair ends section C 160°C

- For the damaged hair ends, please use a low temperature, and do not apply force.

### 9 Apply "LVpro.02" Stand for 10-15 minutes

Apply generously to hair using the applicator.  
In addition, LV pro.2 dose has a repairing effect. If the dose is insufficient, the effect will be reduced.

### 10 Rinse

### 11 Styling

When using "LV Serum" as a non-rinse treatment, use only a small amount.  
Applying too much may cause stickiness.

## Points for using "LV pro."

- ★ If the amount of the agent applied is too thin, the spread may become loose. It is important to apply a sufficient amount. (Medium hair: 180mL)
- ★ For hair that has been straightened before, "LVpro." has a repairing effect even without re-perming. Please apply it for about 10 minutes and heat it to make the hair more shiny and smooth.
- ★ Dry your hair well before perming. If moisture remains, it may cause damage to the hair iron.
- ★ Combined with other companies' products, the dose may be too strong and cause hair damage.
- ★ Be careful when handling hair that is already badly damaged and has no core after the hair quality diagnosis.
- ★ Hair color may become lighter depending on the hair quality and damage.

How to improve rough hair with the high-performance treatment LVpro.

① **Hair quality diagnostic (Consultation)**

Diagnose hair texture and damage. Especially when dealing with severely damaged or bleached hair, carefully judge whether the hair can withstand the heat of a straightener.

② **Shampoo if necessary and dry completely with a towel**

(For hair with a silicone-based conditioner, be sure to wash the hair with shampoo.)

③ **Apply "LVpro.01" [NATURAL]**

Use [NATURAL] for Rough hair .

**Stand for 5-10 minutes**

※Please do not heat

④ **Rinse with water**



- No need for softening test, rinse directly.
- Rinse 1st dose thoroughly with a mild shampoo without rubbing your hair.  
(If the hair is tangled, add a little hair conditioner and rinse.)

⑤ **Completely dry**

⑥ **Hair straightener iron operation**

**160°C**



★ For the rough hair , please use a low temperature, and do not apply force.

⑦ **Apply "LVpro.02"**

**Stand for 10-15 minutes**

Apply generously to hair using the applicator.

In addition, LV pro.2 dose has a repairing effect. If the dose is insufficient, the effect will be reduced.

⑧ **Rinse**

⑨ **Styling**

When using "LV Serum" as a non-rinse treatment, use only a small amount.  
Applying too much may cause stickiness.

**Tips and precautions for improving Rough hair**

- ★ When perming the tail, please adjust the volume in advance so that the surface is heated and the finish will be better.
- ★ It can improve the problem of fluffy hair, but it cannot completely cure the problem of Rough hair .
- ★ After finishing the treatment for Rough hair improvement, follow up with another hair care treatment.

A digital perm that uses the isoelectric point of the hair to create a loose and voluminous texture.

❗ **Hair quality diagnostic (Consultation)**

推奨



❶ **Shampoo if necessary and dry completely with a towel**

(For hair with a silicone-based conditioner, be sure to wash the hair with shampoo.)

❷ **Apply pretreatment agent: "AMAZING WATER78 Professional Use" is recommended**

Since it is heated with a chemical agent, apply a heat-reactive treatment such as "Elcalactone" from the middle to the end of the hair when permin

❸ **Apply "LVpro.01"**

If necessary, use "LVpro. Booster G48"  
(See the recipe at the bottom of the manual ①)

❹ **Curl up**

❺ **Heating and standing: See the table below for the time**

(Just for reference. Please adjust according to hair type.)

Use a heat shield to protect the face and around the surface, refer to the following times for heating.

Hair quality	Set temperature	Heating time
Normal hair	60℃	5~10 min
Fine hair	50~55℃	10 min

❻ **Test for curl**

After heating, unwrap a curl for a test to check the curl.  
If the curl is not enough, reheat at the same temperature for 2~3 minutes.

❼ **Rinse hair**

❽ **Apply "LVpro.02" "LOTION"**

After washing with water with a dropper, apply LVpro.02 (lotion type)  
two times for 5 minutes + 5 minutes.

**Apply in two times,  
leave on  
for 5 min + 5 min**

❾ **Remove the rod Skill Apply "LVpro.02" "LOTION".....**

**Stand for 5 minutes**

After perming, apply LVpro.02 (lotion type), massage into hair strands, and let stand for 5 minutes to improve the fixing power.

❿ **Rinse**

⓫ **Styling**

When using "LV Serum" as a non-rinse treatment, use only a small amount.  
Applying too much may cause stickiness.



Use a straightener and a digital perm to improve the problem of kinky hair and create a natural and dynamic hairstyle

❗ **Hair quality diagnostic (Consultation)**

Diagnose hair texture and damage. Especially when dealing with severely damaged or bleached hair, carefully judge whether the hair can withstand the heat of a straightener.

1 **Shampoo if necessary and dry completely with a towel**

(For hair with a silicone-based conditioner, be sure to wash the hair with shampoo.)

2 **Apply "LVpro.01"**

- When straightening the roots, choose the solution according to the level of frizz.  
(Including the use of "LVpro.Booster G48", please refer to the bottom of the manual ① for the recipe.)
- Apply [NATURAL] or [HARD] to the part of the hair that will be curled from the middle to the end.

**Standing (heating) 15-20min**

- ※ Cover the hair with plastic wrap before heating.
- ※ The temperature is set so that the "Treatment", so be careful not to overheat.

3 **Rinse with water**



- No need for softening test, rinse directly.
- Rinse 1st dose thoroughly with a mild shampoo without rubbing your hair.  
(If the hair is tangled, add a little hair conditioner and rinse.)

4 **Blow dry hair:** Please straighten the part to be ironed by hand.

5 **Hair straightener iron operation**

**180°C (standard)**



- Slice width: 1cm-1.5cm (For strong kinky hair, use a thin slice width)
- Press firmly on the root and lightly tap the part to be curled

6 **Curl up**

After perming your hair with the straightener, wet the part you want to curl with the spray and roll it up.

7 **Digital perm heating**

Since the water content is already low, set the heat to "High temperature" and "Short time".

**Heating at 80-90°C  
for 7 minutes**

8 **Remove the rod**



You can also apply the 2nd dose with the curls on. It can make a noticeable curl.  
In this case, please reverse the order of ⑧ and ⑨.

9 **Apply "LVpro.02"**

**Stand for 10-15 minutes**

Be careful not to stretch the curls at the ends of the hair.

10 **Rinse**

11 **Styling**

When using "LV Serum" as a non-rinse treatment, use only a small amount.  
Applying too much may cause stickiness.

